

# City of Northampton, MA

## Weekly COVID-19 Dashboard

Updated August 12th, 2021

Hampshire County Community Transmission

Moderate

Low

0 - 9.99 new cases per 100,000 people in the past 7 days OR  
0 - 4.99% test positivity in the last 7 days

Moderate

10 - 49.99 new cases per 100,000 people in the past 7 days OR  
5 - 7.99% test positivity in the last 7 days

Substantial

50-99.99 new cases per 100,000 people in the past 7 days OR  
8-9.99% test positivity in the last 7 days

High

≥100 new cases per 100,000 people in the past 7 days OR ≥10% test positivity in the last 7 days

New Confirmed Cases in the Past 14 Days  
7/29/21 - 8/11/21

30

14-Day Daily Avg Incidence Rate  
7/29/21 - 8/11/21

73 cases per day/ 100,000 population

14-Day Test Positivity Rate  
7/29/21 - 8/11/21

0.55%  
3,464 Total Tests Performed

Current Active Cases

24\*\*

Total Confirmed Cases

1/1/20 - 8/12/21

1250

Total Deaths

1/1/20 - 8/12/21

90\*\*\*\*

Total Cases Hospitalized

1/1/20 - 8/12/21

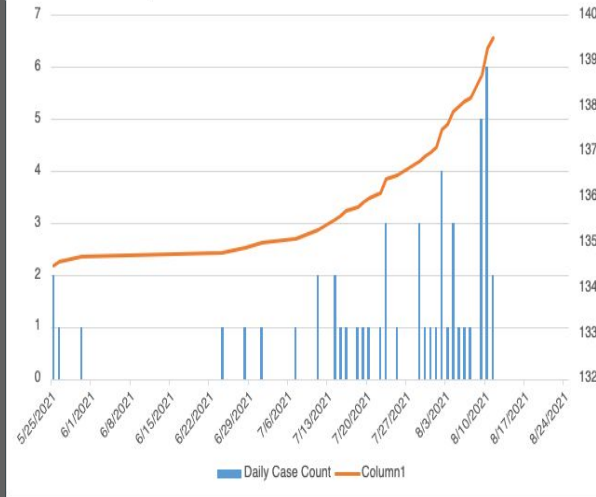
84\*\*\*\*

% Vaccinated Per Capita in Northampton (Partial / Full)\*\*\*

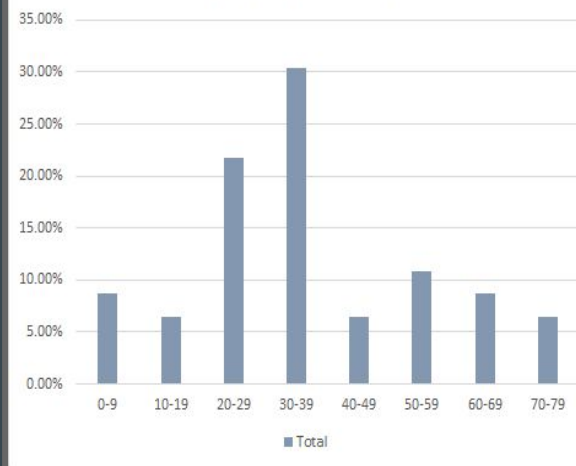
08/10/21

8% / 68%

Daily and Cumulative COVID Cases Since June 2021



COVID-19 Case Breakdown by Age Group - July 1st 2021 to Present



All data are extracted from MAVEN, MDPH, and vitals statistics reporting. Presented data assumes that data sources are current and accurate as of the date they are reported.

\*\*Active cases are cases with reported positive molecular and antigen results, who are currently in isolation under public health supervision.

\*\*\*Partially vaccinated individuals have received 1+ doses of COVID-19 vaccine, but have either not received their final dose or have received their final dose less than 14 days ago. Fully vaccinated individuals have received their final dose of the COVID-19 vaccine at least 14 days ago.

\*\*\*\*Hospitalization and mortality data is calculated based on clinical data for confirmed, laboratory molecular tested cases of COVID-19 only. It does not include data extracted from cases with antigen tests, or otherwise probable or suspect cases of COVID-19. Clinical data is drawn from MAVEN surveillance reporting, individual patient report, and vitals statistics. Data may therefore be underreported. Mortality and hospitalization data includes residents of long term care and assisted living facilities who may have had previous or permanent residence in another town/city.